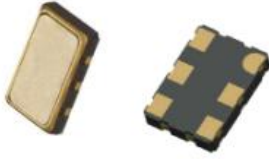


SMD QUARTZ CRYSTAL OSCILLATOR
石英晶体振荡器
6 Pad Version 7.0×5.0 mm


- Excellent Reliability Performance
- EMI shielding possible by grounded lid
- Reflow soldering temperature: 260°C max
- Ceramic Seam Weld package



RoHS compliant

★ PARAMETERS
技术参数

PARAMETERS	参数	SPECIFICATION 规格	
Frequency Range	频率范围	13.5~200MHz	
Supply voltage	工作电压	2.5V	3.3V
Control Voltage Range	控制电压	1.25V ± 1.25V	1.65V ± 1.65V
Frequency Stability	频率偏差	±25ppm / ±50ppm	
Pull ability	压控范围	±50ppm、±100ppm	
Input Current	输入电流	10MHz ≤ F0 < 160MHz: 40mA max 160MHz ≤ F0 < 250MHz: 50mA max	
Operating Temp. Range	工作温度范围	-10~+60°C to -40~+85°C	
Storage Temp. Range	储存温度范围	-55~+125°C	
Output Load	输出负载	HCMOS/TTL (15pF~30pF/10TTL)	
Symmetry	占空比	45% ~ 55% typ. (40% ~ 60% max.) at 0.5×Vdc	
Start-up time	起振时间	5mS max	
Enable/ Disable Function	三态控制	O/E or E/D	

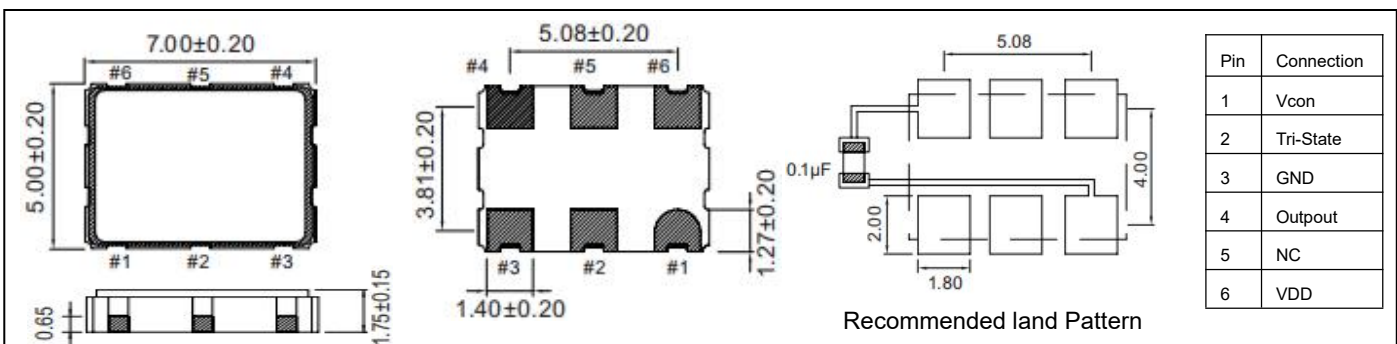
○ All specification subject change without notice. 规格变化, 恕不另行通知。

★ FREQUENCY STABILITY VS. TEMP. 频率温度特性
★ Rise & Fall TIME MAX. 上升/下降时间

Operation Temperature Range	Frequency Stability			
	±20ppm	±25ppm	±30ppm	±50ppm
-10°C~+60°C	○	●	○	○
-20°C~+70°C	○	○	●	○
-40°C~+85°C	○	○	○	●

Frequency	Rise & Fall Time	Note
10.0-20.0 MHz	5nS max	rise time: 0.1 V _{DC} ~ 0.9 V _{DC}
20.0-50.0MHz	4nS max	
50.0-80.0MHz	3nS max	fall time: 0.9 V _{DC} ~ 0.1 V _{DC}
80.0-250.0 MHz	2nS max	

● standard ○ available

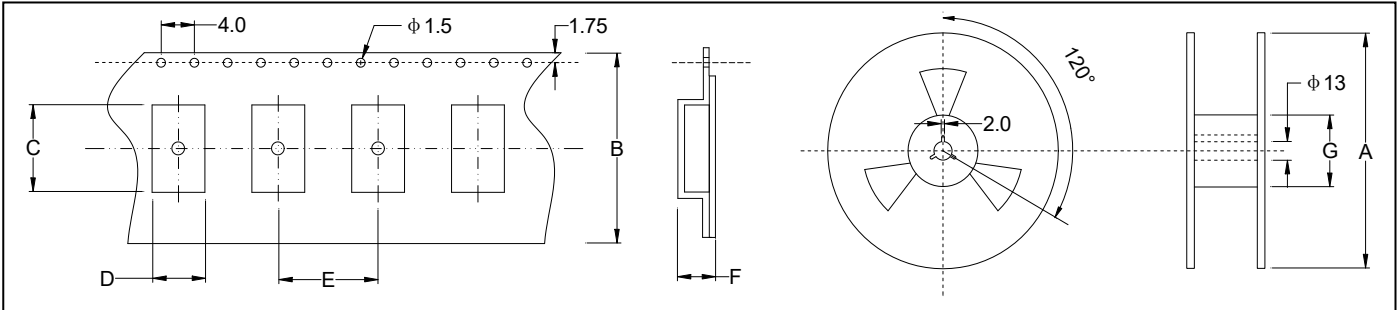
★ DIMENSIONS & LAND PATTERN LAYOUT (Unit: mm) 外形尺寸


PART NUMBER GUIDE 部件号示例 e.g. FVO27.000M3.3SM7-50D(*SM7=7.0×5.0SMD TYPE)

	VCXO 电压控制晶体振荡器	Frequency 频率	Supply voltage 工作电压	Package 盒型	Frequency Stability 频率稳定度 ppm	Operating Temp. Range 工作温度
F	VO	27.000	3.3	SM7	50	D

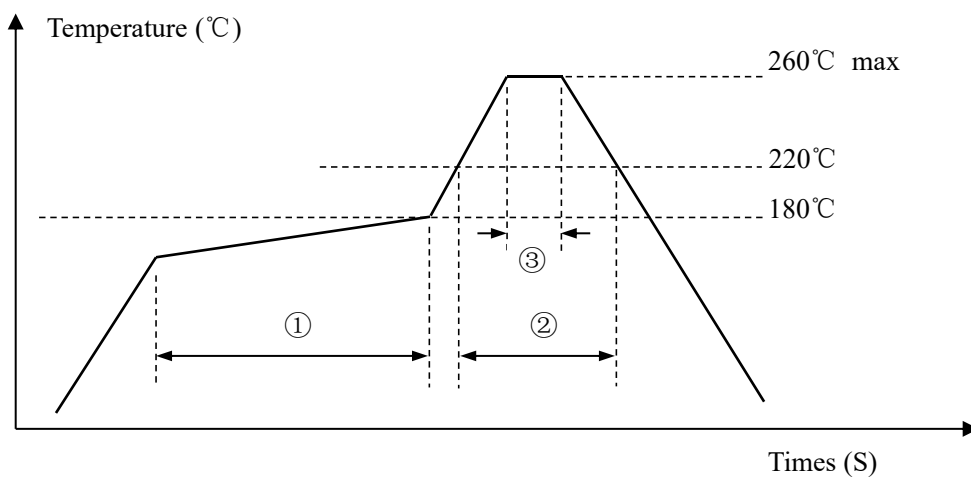
Definition	Description	
Operating Temperature Range	A: -10~+60°C	B: -20~+70°C
	C: -30~+80°C	D: -40~+85°C
	E: -30~+105°C	F: -40~+105°C
	G: -40~+125°C	S: Customer specified

★ TAPING SPECIFICATION (Unit: mm) 编带规格



	A	B	C	D	E	F	G
OSC-SMD7050	178±2.0	16.0±0.3	7.40±0.15	5.40±0.15	8.0±0.1	2.3±0.1	60.5±1.0
1000 pcs per reel							

★ REFLOW SOLDERING PROFILE 回流焊特性



Pb free reflow A	①	Preheat	160~180°C	120sec. max
	②	Primary heat	220°C	60sec. max
	③	Peak	260°C	10sec. max.