

CERAMIC FILTER FOR COMMUNICATION
通讯设备用陶瓷滤波器

2+1 PIN Version 8.0x7.0x8.0 mm

- Bandwidths from $\pm 2.0\text{KHz} \sim \pm 15.0\text{KHz}@6\text{dB}$
- High selectivity
- Resin molded package for easy PCB mounting
- Operating temperature range: -20 to $+80^\circ\text{C}$
- Storage temperature range: -40 to $+85^\circ\text{C}$

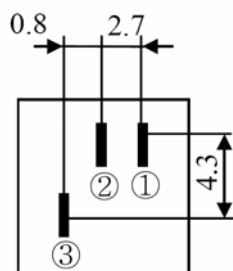
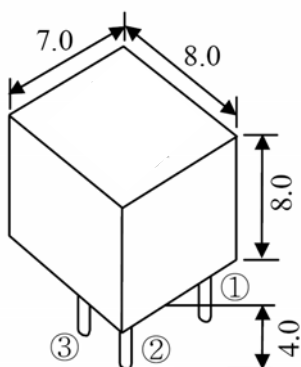


RoHS compliant

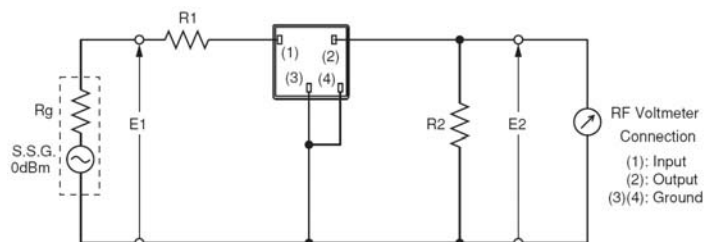
★ PARAMETERS
技术参数

Model	Centre Frequency Fc (KHz)	6dB Band Width (KHz) min	50dB Band Width (KHz) max	Stop Band Attenuation Fc \pm 100KHz (dB) min	Pass Band Ripple (dB) max	Insertion Loss (dB) max	Input/Output Impedance (Ω)	Operating Temperature Range
LT450BU	450.0	± 15.0	± 30.0	27	3.0	4.0	1500	$-20 \sim +80^\circ\text{C}$
LT450CU	450.0	± 12.5	± 24.0	27	3.0	4.0	1500	$-20 \sim +80^\circ\text{C}$
LT450DU	450.0	± 10.0	± 20.0	27	2.0	4.0	1500	$-20 \sim +80^\circ\text{C}$
LT450EU	450.0	± 7.5	± 15.0	27	2.0	6.0	1500	$-20 \sim +80^\circ\text{C}$
LT450FU	450.0	± 6.0	± 12.5	27	2.0	6.0	2000	$-20 \sim +80^\circ\text{C}$
LT450GU	450.0	± 4.5	± 10.0	25	2.0	6.0	2000	$-20 \sim +80^\circ\text{C}$
LT450HU	450.0	± 3.0	± 9.0	25	2.0	6.0	2000	$-20 \sim +80^\circ\text{C}$
LT450IU	450.0	± 2.0	± 7.5	25	2.0	6.0	2000	$-20 \sim +80^\circ\text{C}$
LT450HTU	450.0	± 3.0	± 9	35	2.0	6.0	2000	$-20 \sim +80^\circ\text{C}$
LT450ITU	450.0	± 2.0	± 7.5	35	2.0	6.0	2000	$-20 \sim +80^\circ\text{C}$
LT455BU	455.0	± 15.0	± 30.0	27	3.0	4.0	1500	$-20 \sim +80^\circ\text{C}$
LT455CU	455.0	± 12.5	± 24.0	27	3.0	4.0	1500	$-20 \sim +80^\circ\text{C}$
LT455DU	455.0	± 10.0	± 20.0	27	2.0	4.0	1500	$-20 \sim +80^\circ\text{C}$
LT455EU	455.0	± 7.5	± 15.0	27	2.0	6.0	1500	$-20 \sim +80^\circ\text{C}$
LT455FU	455.0	± 6.0	± 12.5	27	2.0	6.0	2000	$-20 \sim +80^\circ\text{C}$
LT455GU	455.0	± 4.5	± 10.0	25	2.0	6.0	2000	$-20 \sim +80^\circ\text{C}$
LT455HU	455.0	± 3.0	± 9.0	25	2.0	6.0	2000	$-20 \sim +80^\circ\text{C}$
LT455IU	455.0	± 2.0	± 7.5	25	2.0	6.0	2000	$-20 \sim +80^\circ\text{C}$
LT455HTU	455.0	± 3.0	± 9	35	2.0	6.0	2000	$-20 \sim +80^\circ\text{C}$
LT455ITU	455.0	± 2.0	± 7.5	35	2.0	6.0	2000	$-20 \sim +80^\circ\text{C}$

◎ All specification subject change without notice. 规格变化, 恕不另行通知。

★ DIMENSIONS (Unit: mm) 外形尺寸
★ TEST CIRCUIT 测试线路


- ① Input
- ② Ground
- ③ Output



RF Voltmeter Connection
 (1): Input
 (2): Output
 (3)(4): Ground